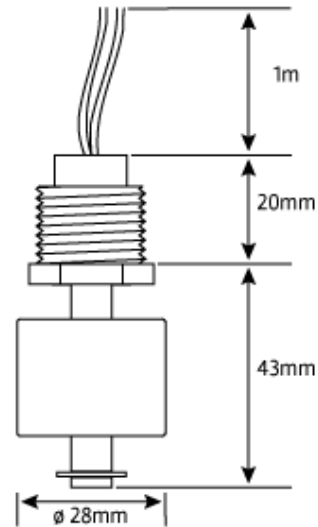


50 Series Vertical Liquid Level Sensor



Switching level depends on sensor material and liquid specific gravity. A polypropylene sensor will switch in approx. 50mm of water.



- Vertically mounted miniature liquid level sensors designed for internal tank mounting.
- The design provides for a cost effective solution where high reliability in a demanding environment is called for.
- Available in PVC, Polypropylene, PPS and Nylon materials to permit use in most chemical temperature environments.
- Coupled with a choice of switching options this design is ideal for food, automotive, petroleum, chemical and laboratory applications.
- Normally open circuit with no liquid. This can be converted to normally closed circuit by inverting the float on the switch stem.
- Available with form A (SPST) or form C (SPDT) contacts.
- The weight of the sensor is approximately 32g.
- A 1 meter PVC cable is provided as standard, for custom cable lengths, contact sales office.

Technical Data

	PVC	Nylon	Polypropylene	PPS
Minimum liquid Specific Gravity	0.8	0.7	0.7	0.9
Maximum Pressure	2 bar	2 bar	2 bar	2 bar
Operating temperature	-20°C to +65°C	-20°C to +80°C	-20°C to +80°C	-30°C to +125°C

50 Series Vertical Liquid Level Sensor

Switch Contact Ratings

Form A switches are rated at 240v AC/DC, 1.0 Amp resistive load only.

Form C switches are rated at 60v DC, 0.25 Amp resistive load only.

For other loads i.e. capacitive, inductive or incandescent lamps please contact Deeter for advice.

For AC circuits ensure the peak voltage x current does not exceed the power rating.

PVC, Nylon and PP form A switches have 16/0.2 PVC insulated wires.

All PPS switches, PVC form C, Nylon form C and PP form C switches have 7/0.2 PTFE insulated wires.

Fixing

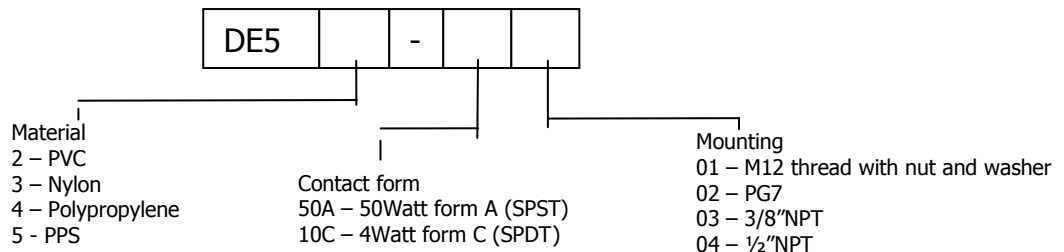
	Hole Size	Torque	Tank Wall Thickness
M12	12mm	2.7Nm	5mm Max
3/8" NPT	Tapped	2.7Nm	
1/2" NPT	Tapped	2.7Nm	

reference size.

This size does not refer to the physical thread diameter.

Caution: NPT threads are specified in their

Ordering Code



Example: DE53-50A01 describes an M12 nylon sensor having a form A switch rated at 50 watts

All electrical equipment should be installed by a qualified/certified electrician.

The Deeter Group follows a policy of continual development of its products and reserves the right to change specifications and/or features without notice.